



# Plan 1824 ELEVATIONS



498 S. Deep Creek  
Dr. Washington, Utah  
84790



Arbor



Bamboo



Willow



Hawthorne

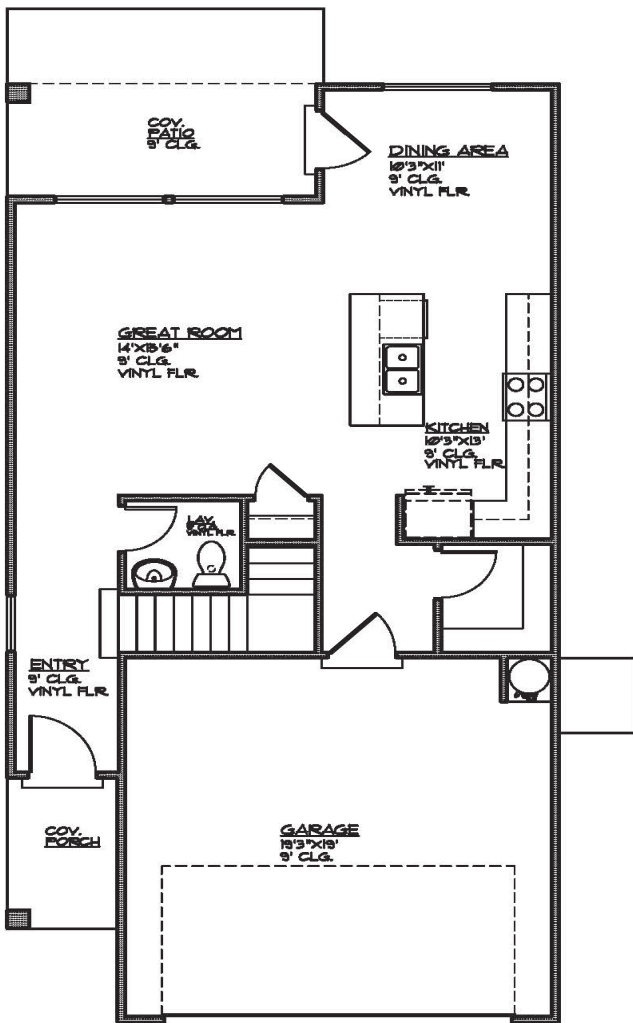


# Plan 1824 FLOOR PLAN



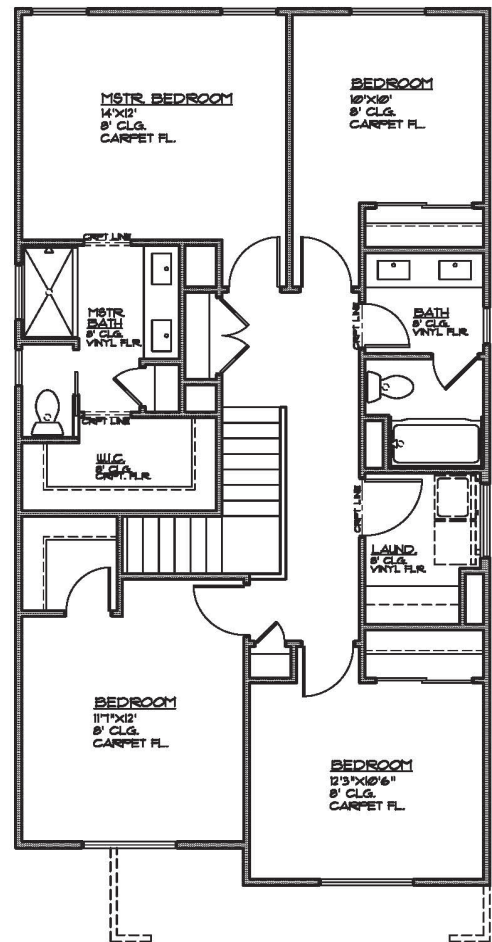
498 S. Deep Creek  
Dr. Washington, Utah  
84790

1824 Sqft · 4 Beds · 2.5 Baths · 2 Garages · 25' ► x 50' ▲



### MAIN FLOOR PLAN

MAIN FLOOR - 716 SQ. FT.  
GARAGE AREA - 306 SQ. FT.  
COV. PORCH - 40 SQ. FT.  
COV. PATIO - 84 SQ. FT.



### UPPER FLOOR PLAN

UPPER FLOOR - 1108 SQ. FT.